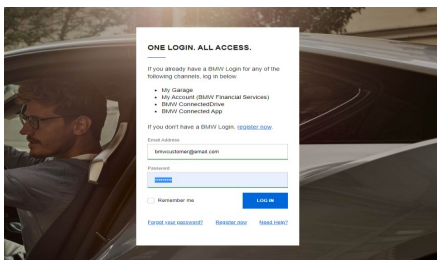


BMW CONNECTED DRIVE. Now available via the My BMW site!

The Ultimate Driving Machine®

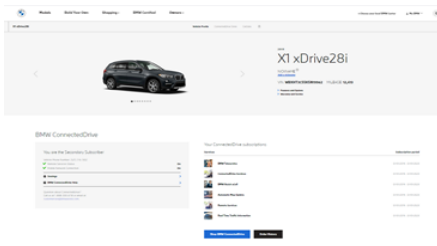


Follow the steps below to get started and navigate the all-new ConnectedDrive Portal, accessible at www.bmwusa.com/MyBMWConnectedDrive, or www.myBMW.com.



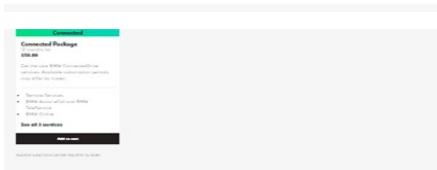
ONE LOGIN.

If you previously had a ConnectedDrive, Financial Services, or My BMW App account, please sign in with your existing email address and password. If you're a new user please register to create a new account.



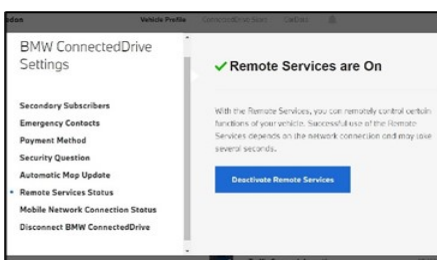
CONNECTED DRIVE OVERVIEW.

Log in to see your BMW's ConnectedDrive information or add your BMW vehicle to your account. Activate ConnectedDrive features by visiting "My Garage" and then select "View Vehicle Profile".



CONNECTED DRIVE STORE.

Easily purchase additional ConnectedDrive services for your vehicle, check on your renewal status, and more. Once logged in, visit "My Garage", and then select "ConnectedDrive Store" from the navigation menu.



SETTINGS.

Manage and review your personal information in the BMW ConnectedDrive Settings menu. Check or update your emergency contacts, payment methods, map updates, remote service status, mobile network connection status, and more.